



**Victor Graphics, Inc.**

1211 Bernard Drive Baltimore, MD 21223

Phone: 410/233-8300

FAx: 410/233-8304

E-mail: [pineapple@victorgraphics.com](mailto:pineapple@victorgraphics.com)

# Adobe Distiller Guide

## Windows Operating System

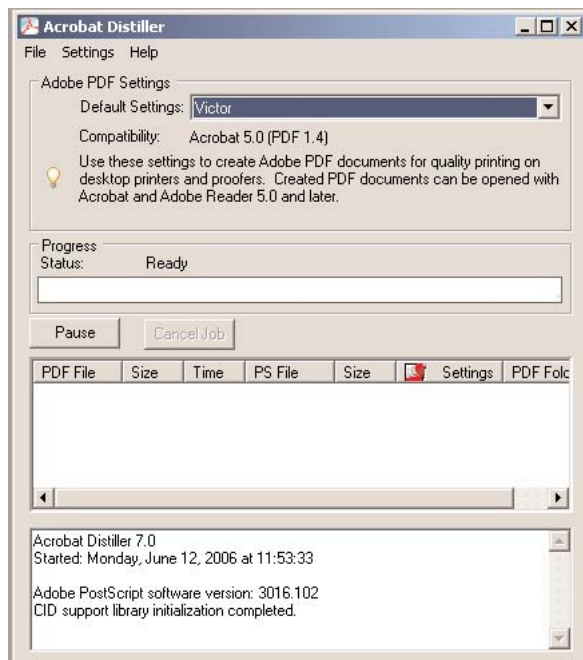


This document is intended as a reference guide for inputting Adobe Distiller Joboptions. Following these parameters will assist in producing PDF files which process efficiently and print as intended. Consult the Configuring a Workstation for PS/PDF Generation document for other important information regarding Adobe Distiller setup. Screenshots are taken from Adobe Distiller 7.x. These parameters can be applied to previous versions of Distiller. Please ignore options in Adobe Distiller 7.x that do not exist in prior versions.

Victor Graphics, Inc. provides a joboptions file that can be downloaded. This joboptions file contains all the settings that are included in this document. This file can be downloaded at [www.victorgraphics.com/download/resources.html](http://www.victorgraphics.com/download/resources.html)

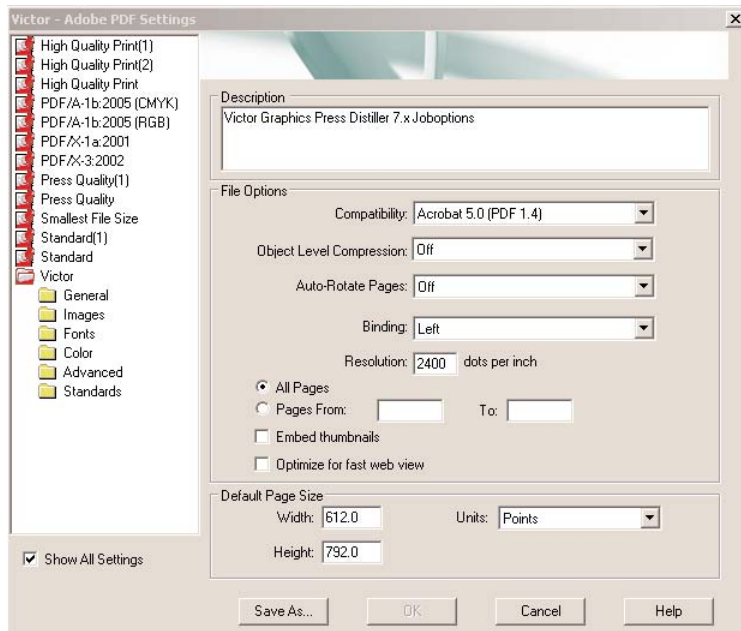
### Supported Adobe Distiller/PDF Versions

Adobe Distiller: v4.x-7.x. PDF versions: 1.3; 1.4, with no transparency; 1.5, with no transparency, layer content, or JPEG2000 compression. All versions of Adobe Distiller should be configured using our specific Joboptions.



### Victor Graphics Joboptions

Use the following screenshots to create a VG\_PDF.joboptions file, or contact your customer service representative for a ready-made file for import into application. The Victor Joboptions name should always be selected next to Default Settings in the main Distiller Window before distilling PostScript files.



• Page size dimensions input in page-layout application will override page size dimensions at bottom of General Tab.

### General Tab

- Compatibility: Acrobat 5.0
- Object-Level Compression: Off
- Auto-Rotate Pages: Off
- Binding: Left
- Resolution: 2400
- All Pages: Check
- Embed Thumbnails: Uncheck
- Units option should be Inches
- Default Page Size-Width: Exact horizontal trim size of document
- Default Page Size-Height: Exact vertical trim size of document
- Select the Images tab

**Note:** If job bleeds, the default page size should allow an extra .125" on all sides (8.75 x 11.25)

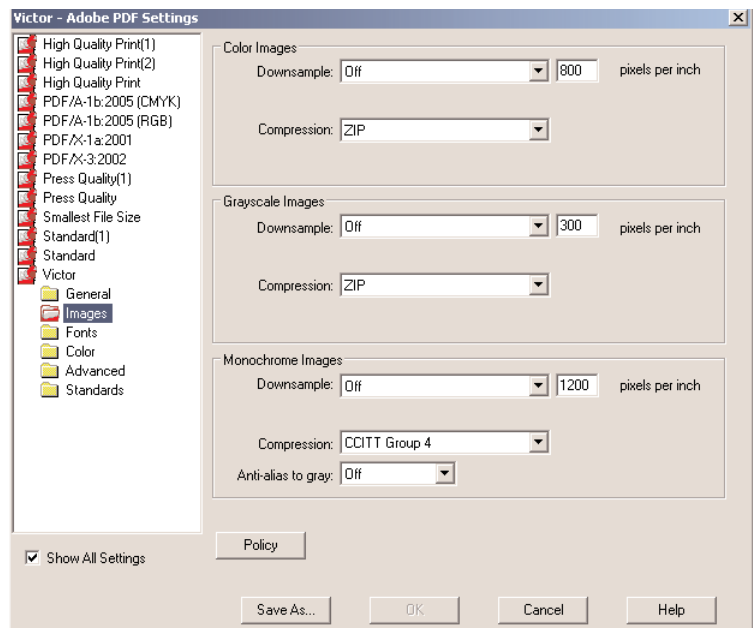
### Images Tab

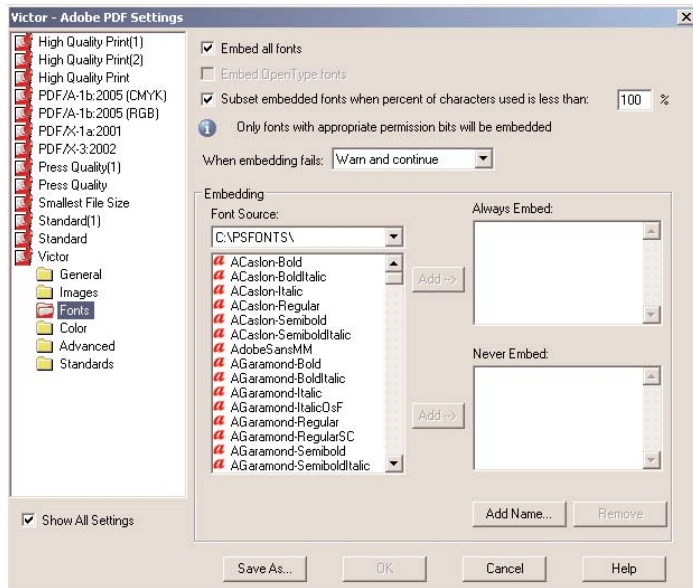
- Color Images-Sampling: Off / 300 pixels per inch
- Color Images-Compression: ZIP
- Grayscale Images-Sampling: Off / 300 pixels per inch
- Grayscale Images-Compression: ZIP
- Monochrome Images-Sampling: Off / 1200 pixels per inch
- Monochrome Images-Compression: CCITT Group 4
- Anti-Alias to gray: Off
- Select the Fonts tab

• When using no down sampling in combination with ZIP compression, the smallest file sizes are not created.

• Compression can also be used safely with monochrome images

NOTE: Adobe Distiller 4.x and 5.x display a Compress Text and Line Art option at bottom of this tab. It should be selected.





## Fonts Tab

- Check **Embed All Fonts**
  - **Uncheck Embed OpenType fonts**
  - Check the **Subset embedded fonts when percent of characters used is less than 100% option.**
  - Select **Warn and Continue** When embedding fails
  - **Embedding:** Select the location(s) from the paths defined in the **Font Locations** steps on page 1.
  - Select the **Color tab**
- The **Always Embed** and **Never Embed** windows should remain empty.

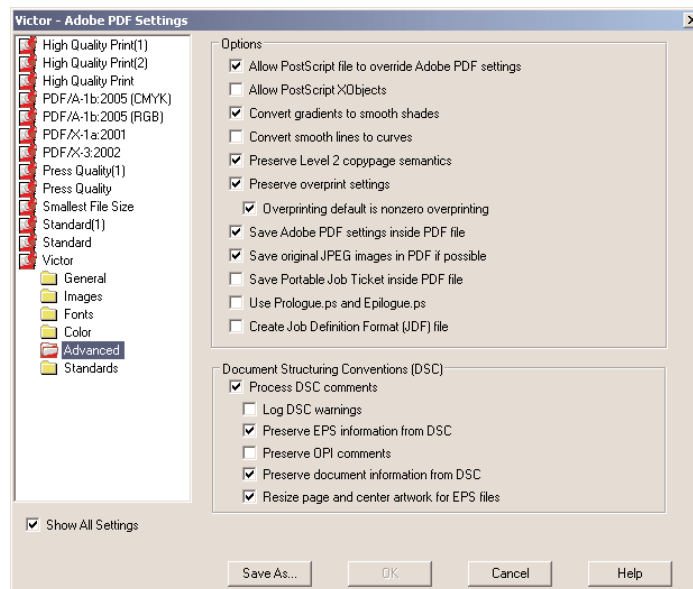
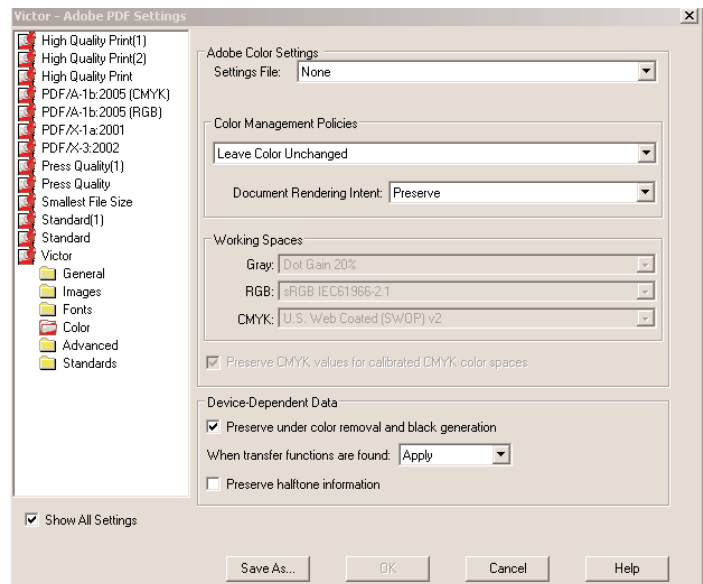
## Color Tab

- Settings File: None
- Color Management Policies: Leave Color Unchanged
- Document Rendering Intent: Default / Preserve
- Working Spaces-Gray: None
- Working Spaces-RGB: Adobe RGB(1998)
- Working Spaces-CMYK: U.S. Japan Web Coated (Ad)
- Preserve CMYK values for calibrated CMYK color spaces:

Check or Grayed Out

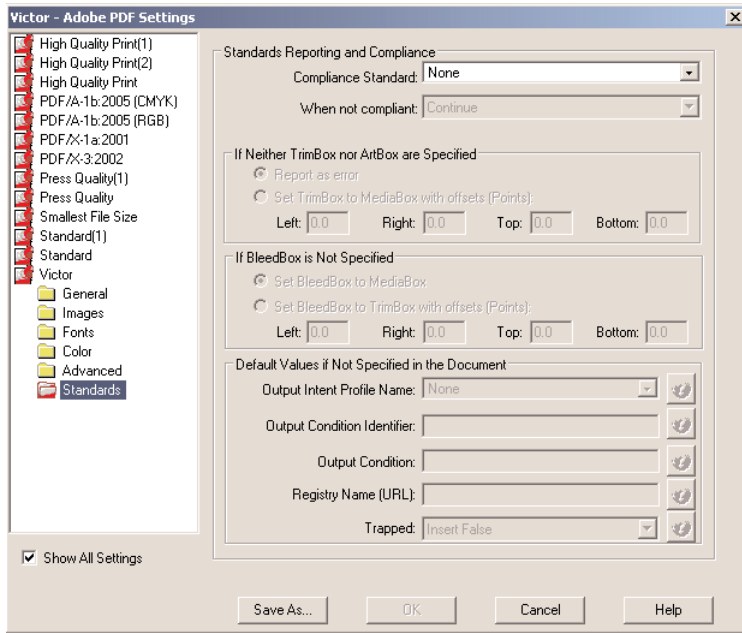
- Check **Preserve** Under Color Removal and Black Generation
- When transfer functions are found: Preserve
- Preserve Halftone Information: Uncheck
- Select the **Advanced** tab

*Note: Adobe Distiller 4.x and 5.x display a Preserve Overprint Setting option inside Device-Dependent Data area. It should be selected.*



## Advanced Tab

- Allow PostScript file to override Adobe PDF Settings: Uncheck
- Allow PostScript XObjects: Uncheck
- Convert gradients to smooth shades: Check
- Convert smooth lines to curves: Uncheck
- Preserve Level 2 copypage semantics: Check
- Preserve Overprint Settings: Check
- Overprinting default is nonzero overprinting: Check
- Save Adobe PDF settings inside PDF file: Check
- Save original JPEG images in PDF if possible: Check
- Save Portable Job Ticket inside PDF file: Uncheck
- Use Prologue.ps and Epilogue.ps: Uncheck
- Create Job Definition Format (JDF) file: Uncheck
- Process DSC comments: Check
- Log DSC warnings: Uncheck
- Preserve EPS information from DSC: Check
- Preserve OPI comments: Uncheck
- Preserve document information from DSC: Check
- Resize page and center artwork for EPS files: Check
- Click on the **Standards** button



## Standards Tab

- Compliance Standard: None
- All other options are grayed out and cannot be changed
- Click on the OK button. If prompted for a file name to save the settings, enter an appropriate name.

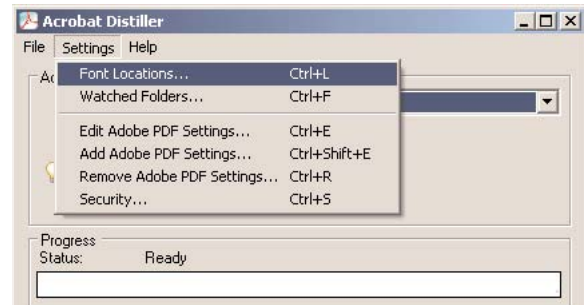
## Font Locations Menu

The Helvetica and Times Roman fonts are sometimes used for outputting page information from QuarkXpress and Adobe Pagemaker. PDF creation may abort in these instances when the Adobe Distiller Joboptions are set to cancel when embedding fails. Adding a specific folder of fonts to Distiller's Font Locations menu will prevent Distiller from unnecessarily aborting.

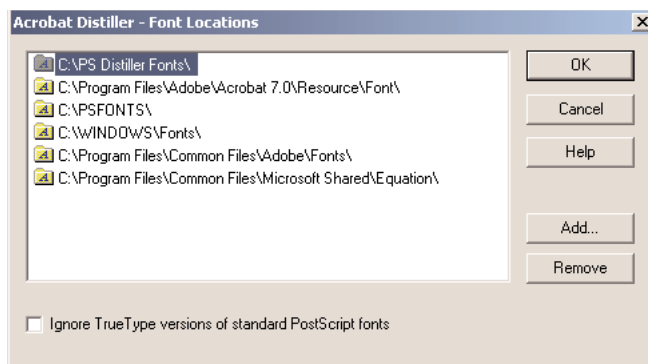
## Adding a Fonts Folder

(if one hasn't been created)

- Settings Menu
- Select Settings/Font Locations...



## Font Locations



- Verify Ignore TrueType versions of standard PostScript fonts is deselected.

- Select Add button.
- Browse For folder
- Select PS Fonts or PS Mac\_Distiller\_Fonds folder.

*Note: This folder should contain Type 1 fonts: Helvetica, Times Roman, Symbol, and Courier.*

*Note: Folder will now appear in Font Locations list.*

- Select OK button to exit Font Locations window.
- Font folder addition process is complete.

- Select OK button.

