



Victor Graphics, Inc.
1211 Bernard Drive Baltimore, MD 21223

Phone: 410/233-8300
Fax: 410/233-8304
E-mail: pineapple@victorgraphics.com
www.victorgraphics.com

PostScripting InDesign CS Guide

MAC OSX System



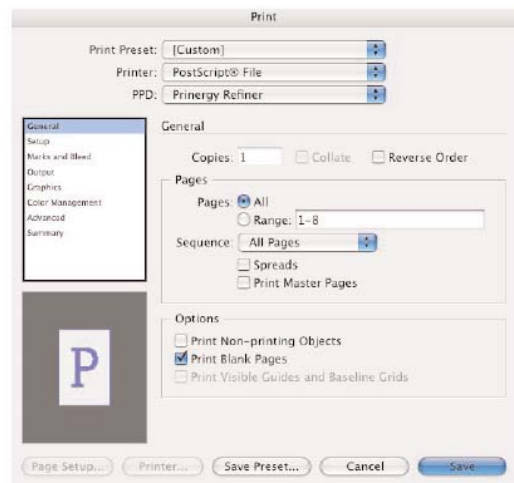
This document is intended as a reference guide for settings in Adobe InDesign for PostScripting text files. Following these parameters will assist in producing PDF files which process efficiently and print as intended. Adobe InDesign documents for Windows must be converted into PostScript before it can be used for electronic imposition. Please ensure that the Prinergy Refiner PPD has been installed onto your Windows system. Please refer to the Prinergy Setup Guide located on Victor Graphics web site at www.victorgraphics.com/html/downloads.html. Exporting to PDF from InDesign is not recommended. If you have any questions on this please contact your customer service representative for further information.

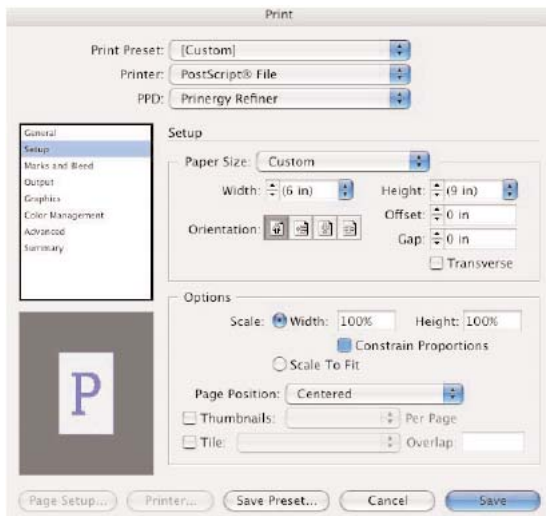
Screenshots are taken from InDesign CS.

From the File menu select Print and proceed to set the options in the various sections as follows:

General Section

- Print Preset: Custom
- Printer: PostScript File
- PPD: Prinergy Refiner
- Copies: 1
- Collate: Uncheck
- Reverse Order: Uncheck
- Pages: All
- Sequence: All Pages
- Spreads: Uncheck
- Print Master Pages: Uncheck
- Print Non-printing Objects: Uncheck
- Print Blank Pages: Check
- Print Visible Guides and Baseline Grids: Uncheck
- Click on the Setup option (listed under General, not at the bottom of the form).



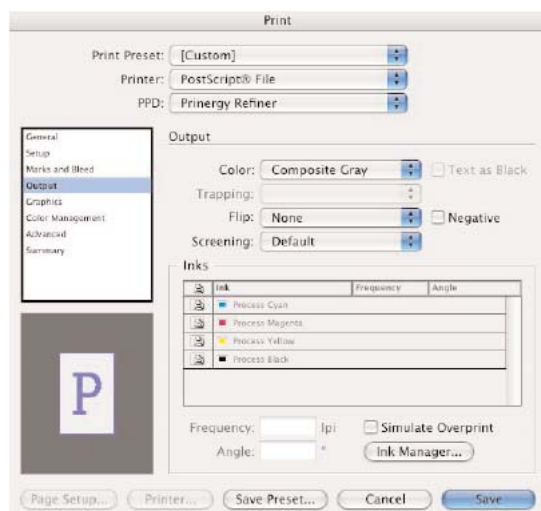
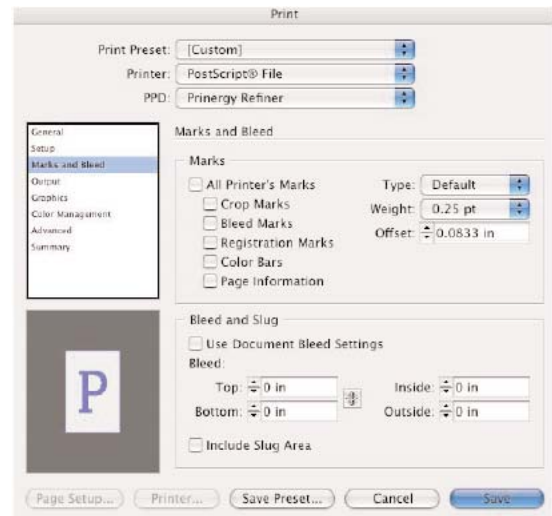


Setup Section

- Paper Size: Custom
- Width: Exact horizontal trim size of document plus .125" if job contains bleeds
- Height: Exact vertical trim size of document plus .125" if job contains bleeds
- Orientation: Heads Up (icon on the far left)
- Offset: 0"
- Gap: 0"
- Transverse: Uncheck
- Scale: Check
- Scale Width: 100%
- Scale Height: 100%
- Constrain Proportions: Unchecked
- Scale to Fit: Uncheck
- Page Position: Centered
- Thumbnails: Uncheck
- Tile: Uncheck
- Overlap: Leave Blank
- Click on the Marks and Bleed option

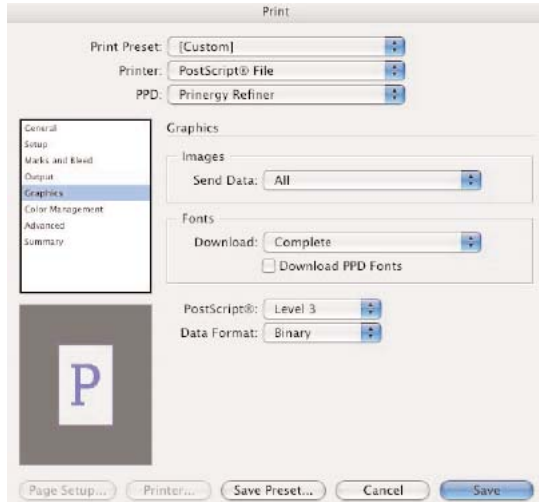
Marks and Bleed Section

- All Printer's Marks: Uncheck
- Crop Marks: Uncheck
- Bleed Marks: Uncheck
- Registration Marks: Uncheck
- Color Bars: Uncheck
- Page Information: Uncheck
- Type: Default
- Weight: 0.25pt
- Offset: 0.0833"
- Use Document Bleed Settings: Uncheck
- Top: Bleeds .125", no bleeds enter 0"
- Bottom: Bleeds .125", no bleeds enter 0"
- Inside: Bleeds .125", no bleeds enter 0"
- Outside: Bleeds .125", no bleeds enter 0"
- Include Slug Area: Uncheck
- Click on the Output option



Output Section

- Color: Composite Gray for Black and White work, and Composite CMYK for Color work
- Text as Black: Uncheck
- Trapping: None
- Flip: None
- Negative: Uncheck
- Screening: Default
- Frequency: None
- Angle: None
- Simulate Overprint: Uncheck
- Click on the Graphics option



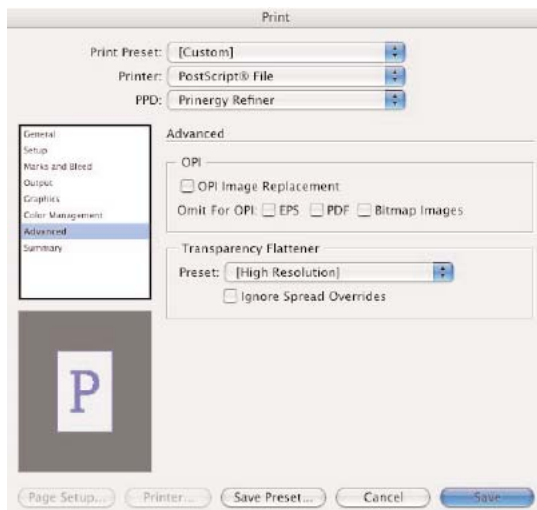
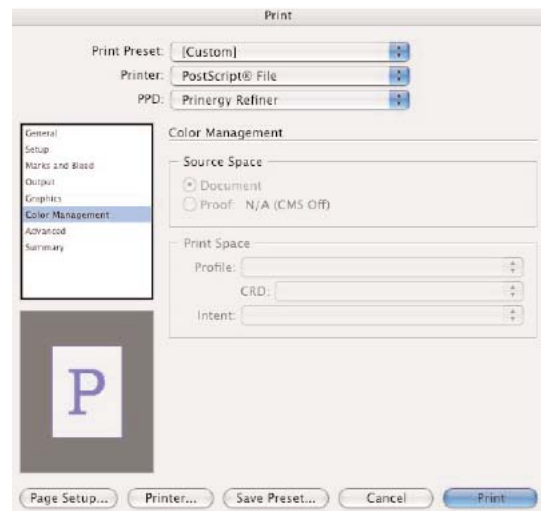
Graphics Section

- Images-Send Data: All
- Fonts-Download: Complete
- Download PPD Fonts: Uncheck
- PostScript: Level 3
- Data Format: Binary (Not ASCII)
- Click on the Color Management option

Color Management Section

Please Note: Please convert all graphics to CMYK before they are placed into InDesign.

- Source Space: Check Document
- Profile: None
- CRD: None
- Intent: None
- Click on the Advanced option



Advanced Section

- OPI Image Replacement: Uncheck
- Omit For OPI: All Uncheck
- Transparency Flattener-Preset: High Resolution
- Ignore Spread Overrides: Uncheck
- Click on the Save Preset and assign a name (i.e. Victor Graphics)button

Saving the PostScript File

- File Name: Name of File with .a ps extension
- Click the Save button

A PostScript file has just been generated. From here, please follow the Adobe Distiller instructions so that this new file is run through Adobe Distiller before it is sent to Victor Graphics. If there are any questions, please contact your customer service representative.