



Victor Graphics, Inc.

1211 Bernard Drive Baltimore, MD 21223

Phone: 410/233-8300

Fax: 410/233-8304

E-mail: pineapple@victorgraphics.com

www.victorgraphics.com

PostScript File Generation

Prinerly Refiner PPD Setup / Windows 2000



This document will assist in properly preparing PostScript files to sent to Victor Graphics, Inc. Please download the latest Adobe PostScript driver from www.adobe.com **AND** the Prinerly Refiner PPD for Windows from the Victor Graphics website (www.victorgraphics.com/download/support.html)before proceeding.

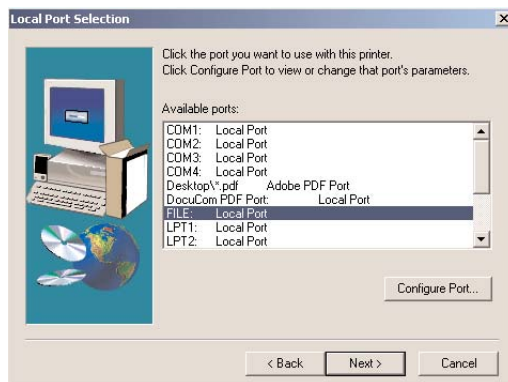
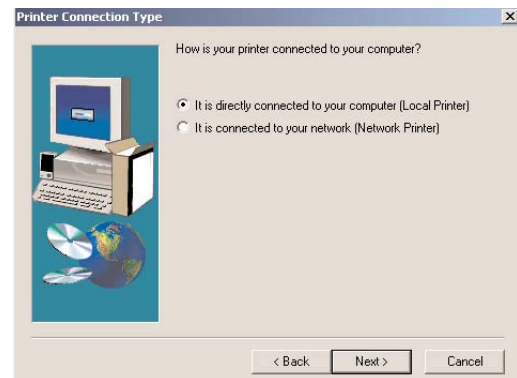
After the download is complete, double-click the Adobe program file `winsteng.exe` to begin the installation process.



- Select *Next* to the *Welcome* window
- Select *Accept* to the *End User License Agreement* window.

Printer Connection Type Section

- Select *It is directly connected to your computer (Local Printer)*
- Select *Next*

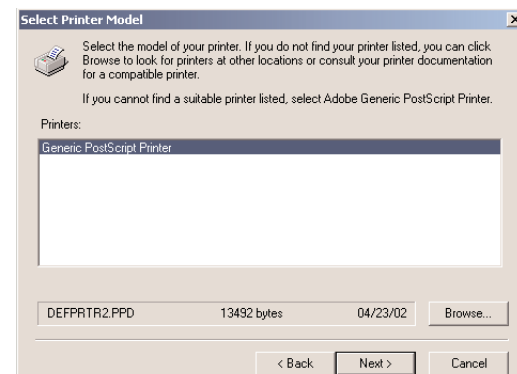


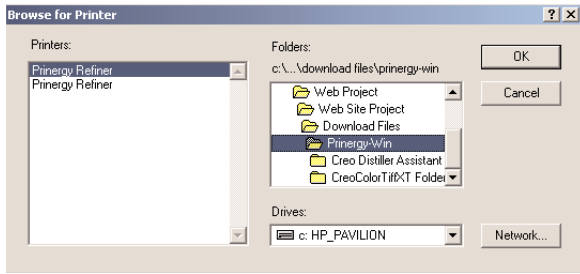
Local Port Selection

- Highlight *FILE: Local Port*
- Select *Next*

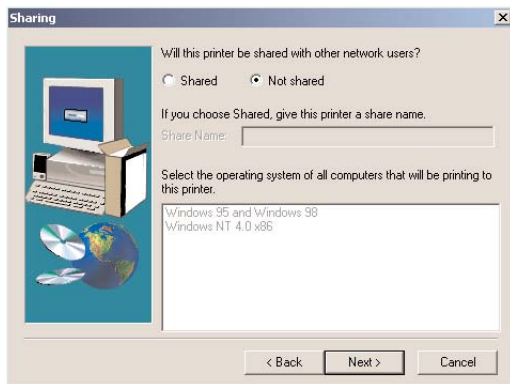
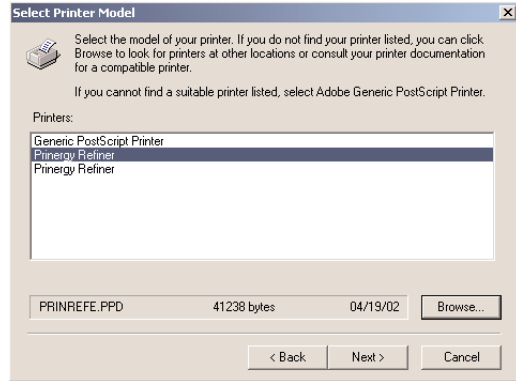
Select Printer Model Section

- Click *Browse* to locate and select the Prinerly Refiner PPD downloaded earlier.
- Select *Prinerly Refiner* from the Printers list
- Select *OK*





- Prinerogy Refiner now appears in the Printers list.
- Highlight Prinerogy Refiner
- Select *Next*

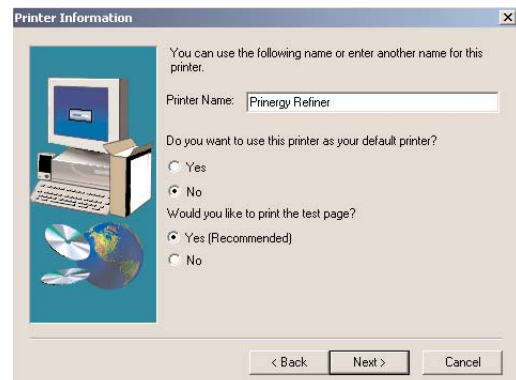


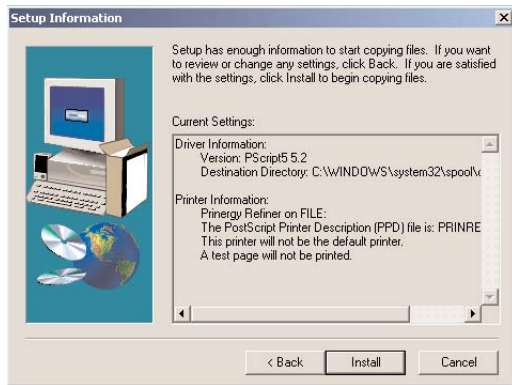
Sharing Section

- Shared: Uncheck
- Not Shared: Check
- Click on *Next*

Printer Information Section

- In the Printer Name text box type Prinerogy Refiner
- Select No for Do you want to use this printer as your default printer?
- Select No for Would you like to print the test page?
- Select *Next*



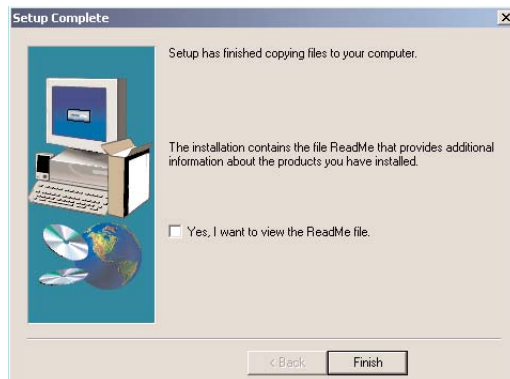
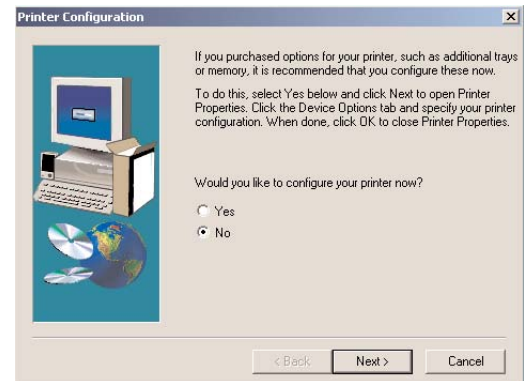


Setup Information Section

- Verify Prineray Refiner is being used in the PostScript Printer Description (PPD) file.
- Select *Install*

Printer Configuration Section

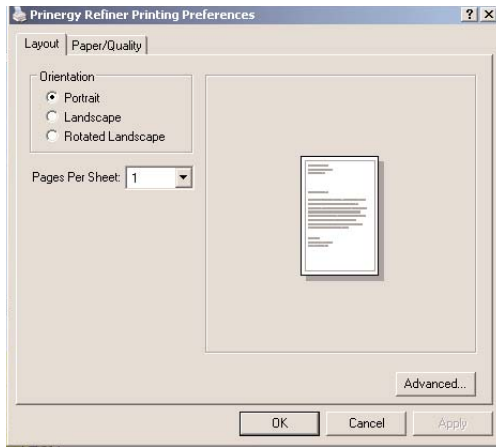
- Select No for Would you like to configure your printer now?:
- Select *Next*



Setup Complete Section

- I want to view the ReadMe file should be uncheck
- Click on *Finish*

If prompted to restart the computer please do so now. Once the computer has restarted continue with Prineray Refiner Preference setup.

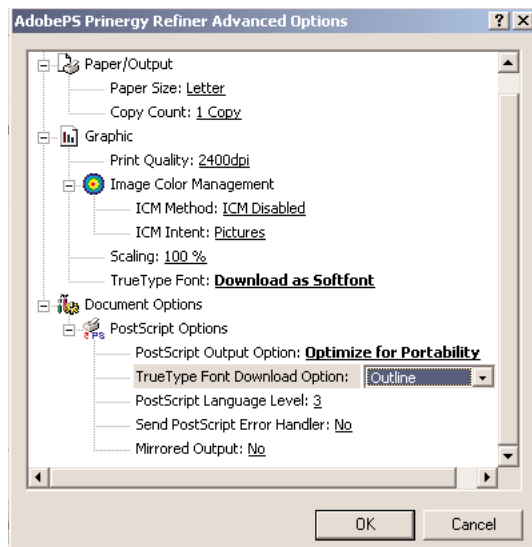
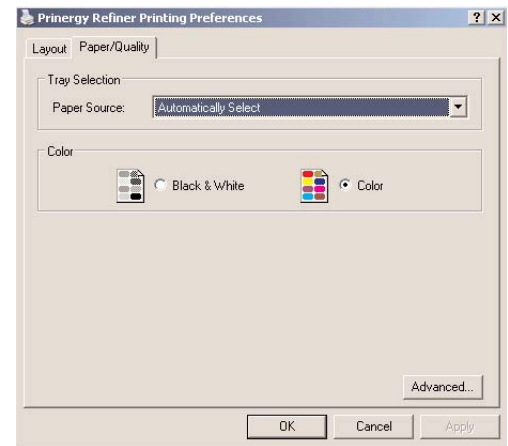


Setting Prinerigy Refiner Preferences

- Click on the Start Menu located on the bottom left of the screen
- Select Printers and Faxes to open the printers form
- Highlight the Prinerigy Refiner printer
- From the menu at the top of the printers form, select File and then Printing Preferences
- Select the Layout tab
- Select the Portrait
- Pages Per Sheet: 1
- Select the Paper/Quality tab

Paper/Quality Section

- Paper Source: Automatically Select
- Color: Select Black & White for Black and White work or select Color for Color work
- Select the *Advanced* button



Advanced Options Section

- Paper Size: Select Letter or choose larger size if desired
- Copy Count: 1 Copy
- Print Quality: 2400dpi
- ICM Method: ICM Disabled
- ICM Intent: Pictures
- Scaling: 100%
- TrueType Font: Download as Softfont
- PostScript Output Option: Optimize for Portability
- TrueType Font Download Option: Outline
- PostScript Language Level: 3
- Send PostScript Error Handler: No
- Mirrored Output: No
- Select **OK**
- Select **Apply**, then **OK** until you have close all the Printing Preferences windows.

PPD Files And Placement

Creo Color TIFF XT

File Name: CreoColorTiffXT.xnt

File Placement: QuarkXpress\XTension\

Purpose: Allows preservation of spot colors in composite PDF when a grayscale TIFF has been colorized in QuarkXpress 4.x or 5.x.

Adobe Distiller Joboptions

File Name: VG_PDF.joboptions

File Placement: Acrobat 6.x - C:\Documents and Settings\All Users\Shared Documents\Adobe PDF 6.0\Settings\
Acrobat 4.x, 5.x - C:\Program Files\Acrobat\Distillr\Settings\

Purpose: This file will allow selection of Victor Graphics-specific Joboptions in the primary Distiller window.

Adobe Distiller Fonts Folder

Folder Name: PC_Distiller_Fonts (If a folder exists than you do not need to create one)

File Placement: Anywhere except System Folder If you already have a folder in use, please use that folder.

Purpose: Distiller frequently requires access to these fonts. If they are not available, PDF generation may abort when using our recommended Distiller Joboptions.

Prinergy Refiner PPD

File Name: prinrefe.ppd

File Placement: Windows 98, ME - C:\Windows\system\
Windows 2000, XP- C:\Windows\system32\spool\drivers\w32x86\
Windows 2000, XP- C:\Windows\system32\spool\drivers\w32x86\

Purpose: Device-independent PPD similar to Acrobat PPD. Either this or the Acrobat PPD can be used.