



Victor Graphics, Inc.

1211 Bernard Drive Baltimore, MD 21223

Phone: 410/233-8300

Fax: 410/233-8304

E-mail: pineapple@victorgraphics.com

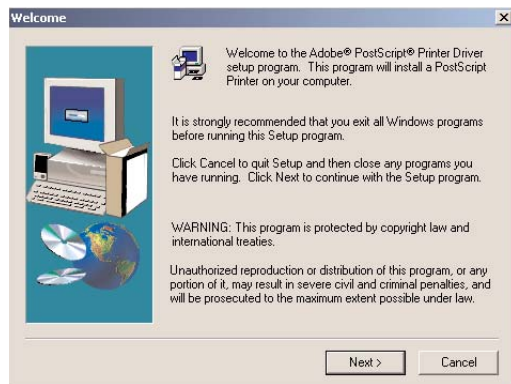
www.victorgraphics.com

PostScript File Generation

Prinerly Refiner PPD Setup / Windows XP



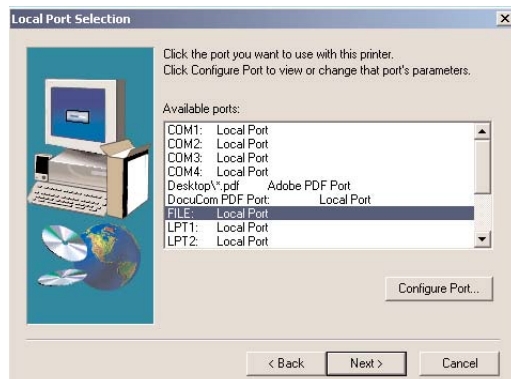
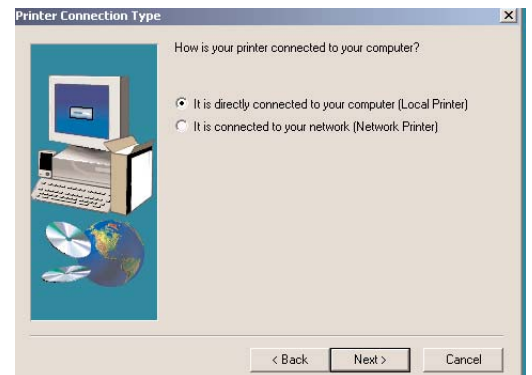
This document will assist in properly preparing PostScript files to sent to Victor Graphics, Inc. Please download the latest Adobe PostScript driver from www.adobe.com AND the Prinerly Refiner PPD for Windows from the Victor Graphics website (www.victorgraphics.com/download/resources.html)before proceeding. After the download is complete, double-click the Adobe program file `winsteng.exe` to begin the installation process.



- Select *Next* to the *Welcome* window
- Select *Accept* to the *End User License Agreement* window.

Printer Connection Type Section

- Select It is directly connected to your computer (Local Porter)
- Select *Next*

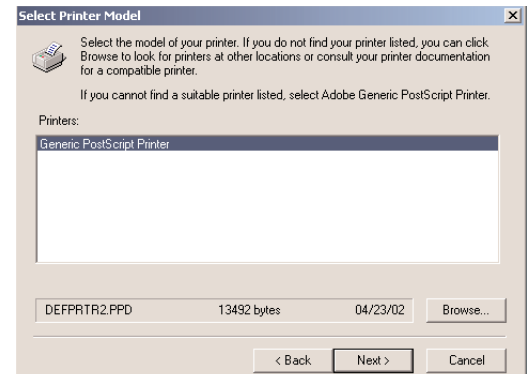


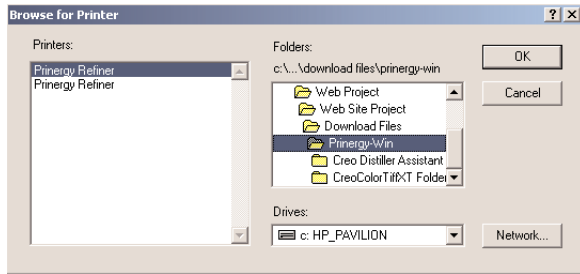
Local Port Selection

- Highlight FILE: Local Port
- Select *Next*

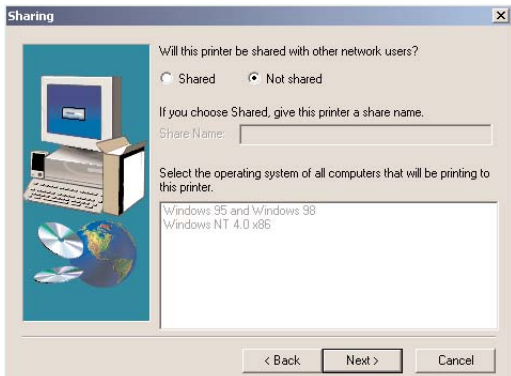
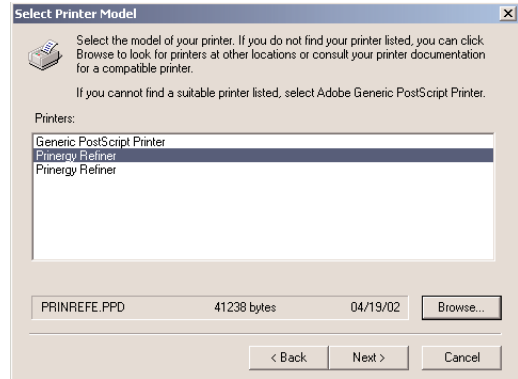
Select Printer Model Section

- Click Browse to locate and select the Prinerly Refiner PPD downloaded earlier.
- Select Prinerly Refiner from the Printers list
- Select *OK*





- Prineroy Refiner now appears in the Printers list.
- Highlight Prineroy Refiner
- Select *Next*

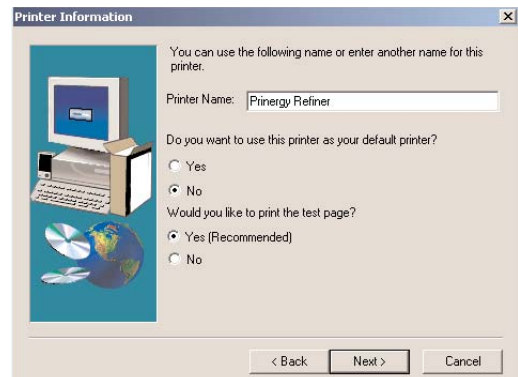


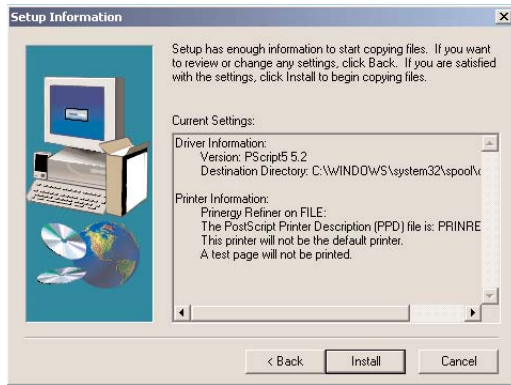
Sharing Section

- Shared: Uncheck
- Not Shared: Check
- Click on *Next*

Printer Information Section

- In the Printer Name text box type Prineroy Refiner
- Select No for Do you want to use this printer as your default printer?
- Select No for Would you like to print the test page?
- Select *Next*



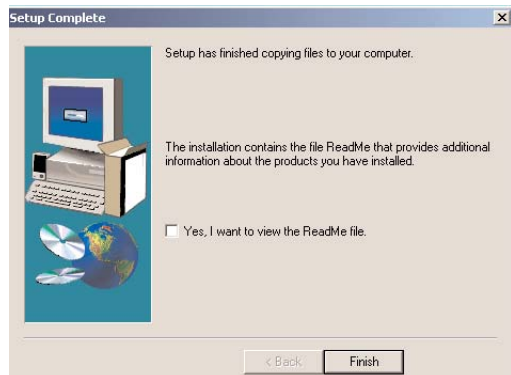
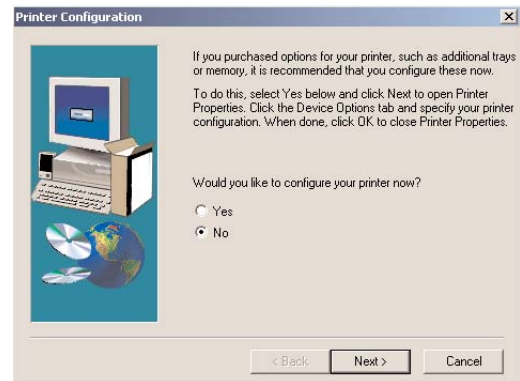


Setup Information Section

- Verify Prinergy Refiner is being used in the PostScript Printer Description (PPD) file.
- Select ***Install***

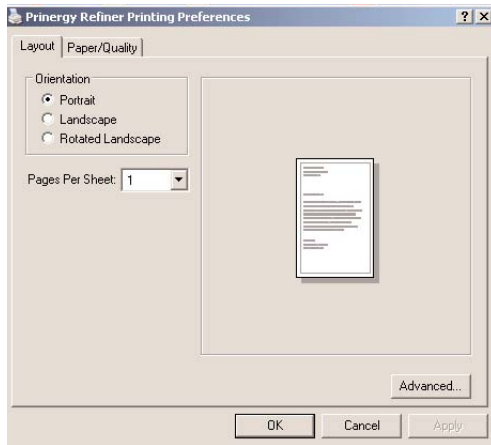
Printer Configuration Section

- Select No for Would you like to configure your printer now?:
- Select ***Next***



Setup Complete Section

- I want to view the ReadMe file should be uncheck
- Click on ***Finish***

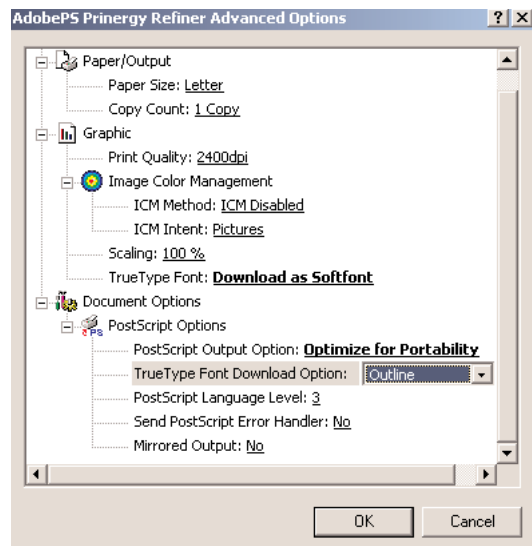
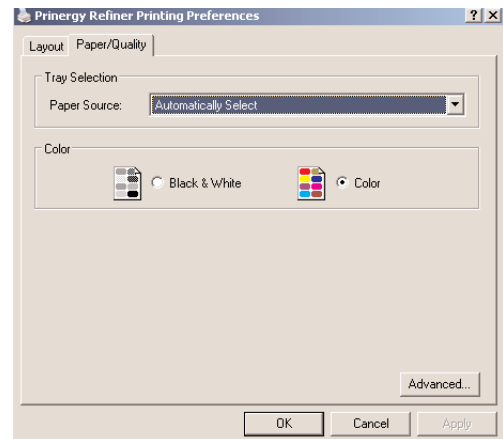


Setting Prinergy Refiner Preferences

- Click on the Start Menu located on the bottom left of the screen
- Select Printers and Faxes to open the printers form
- Highlight the Prinergy Refiner printer
- From the menu at the top of the printers form, select File and then Printing Preferences
- Select the Layout tab
- Select the Portrait
- Pages Per Sheet: 1
- Select the Paper/Quality tab

Paper/Quality Section

- Paper Source: Automatically Select
- Color: Select Black & White for Black and White work or select Color for Color work
- Select the Advanced button



Advanced Options Section

- Paper Size: Select Letter or choose larger size if desired
- Copy Count: 1 Copy
- Print Quality: 2400dpi
- ICM Method: ICM Disabled
- ICM Intent: Pictures
- Scaling: 100%
- TrueType Font: Download as Softfont
- PostScript Output Option: Optimize for Portability
- TrueType Font Download Option: Outline
- PostScript Language Level: 3
- Send PostScript Error Handler: No
- Mirrored Output: No
- Select **OK**
- Select **Apply**, then **OK** until you have close all the Printing Preferences win dows.

Printing PostScript

You have completed the configured of the Prinergy Refiner device for generating PostScript files from Windows XP applications.

PPD Files And Placement

Creo Color TIFF XT

File Name: CreoColorTiffXT.xnt

File Placement: QuarkXpress\XTension\

Purpose: Allows preservation of spot colors in composite PDF when a grayscale TIFF has been colorized in QuarkXpress 4.x or 5.x.

Adobe Distiller Joboptions

File Name: VG_PDF.joboptions

File Placement: Acrobat 6.x - C:\Documents and Settings\All Users\Shared Documents\Adobe PDF 6.0\Settings\
Acrobat 4.x, 5.x - C:\Program Files\Acrobat\Distillr\Settings\

Purpose: This file will allow selection of Victor Graphics-specific Joboptions in the primary Distiller window.

Adobe Distiller Fonts Folder

Folder Name: PC_Distiller_Fonts (If a folder exists than you do not need to create one)

File Placement: Anywhere except System Folder If you already have a folder in use, please use that folder.

Purpose: Distiller frequently requires access to these fonts. If they are not available, PDF generation may abort when using our recommended Distiller Joboptions.

Prinerger Refiner PPD

File Name: prinrefe.ppd

File Placement: Windows 98, ME - C:\Windows\system\
Windows 2000, XP - C:\Windows\system32\spool\drivers\w32x86\
Windows 2000, XP - C:\Windows\system32\spool\drivers\w32x86\

Purpose: Device-independent PPD similar to Acrobat PPD. Either this or the Acrobat PPD can be used.