



Victor Graphics, Inc.

1211 Bernard Drive Baltimore, MD 21223

Phone: 410/233-8300

Fax: 410/233-8304

E-mail: pineapple@victorgraphics.com

www.victorgraphics.com

QuarkXPress - Printing a Document

Windows Operating System

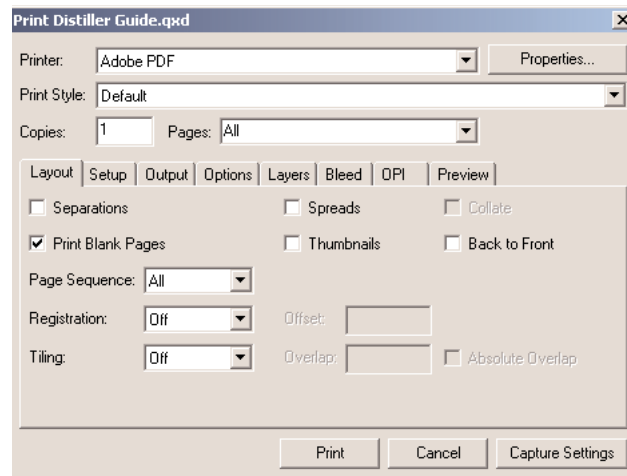


This document is intended as a *reference* guide for settings in QuarkXpress *to print out a document*. These settings may vary slightly from those required in generating PostScript from Quark. Consult the Configuring a Workstation for PS/PDF Generation document for other important information regarding Adobe Distiller setup.

Exporting to PDF from Quark is not recommended. Any PDF's sent to Victor Graphics must be generated with Adobe Distiller. If you have any questions on this please contact your customer service representative for further information. Screenshots are taken from Quark 6.x. These parameters can be applied to previous versions of Quark.

Supported Adobe Distiller/PDF Versions

QuarkXPress: v4.x-7.x.



From Quark select File and Page Setup. This will open the Print form that contains the tabs with the settings that will need to be set.

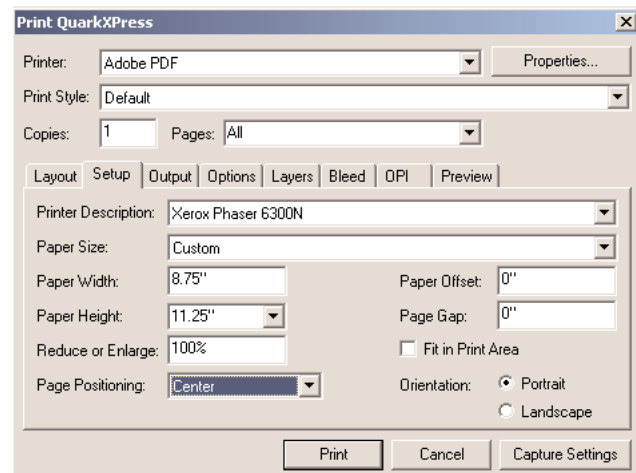
Layout Tab

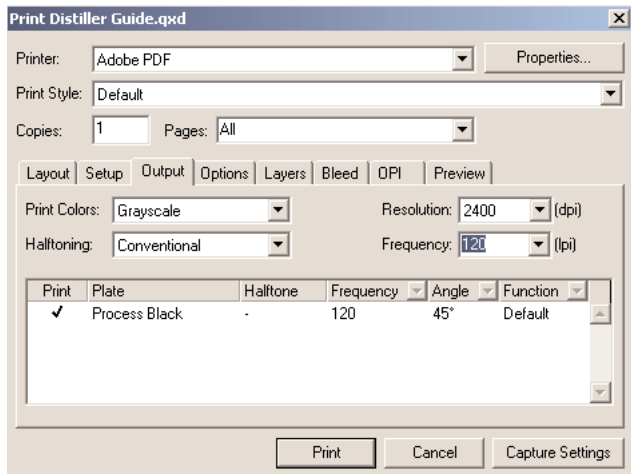
- Check the Print Blank Pages Option
- Registration is Off
- Tiling is Off

If a job requires Registration Marks, make sure that Offset is 9pt. (Marks are not necessary if file is setup according to these specs.)

Setup Tab

- The Printer Description can be any printer you select
- Set the Paper Size to customer
- Set the Paper Width to 8.75"
- Set the Paper Height to 11.25"
- Select Center for the Page Positioning
- Paper Offset is 0"
- Paper Gap is 0"



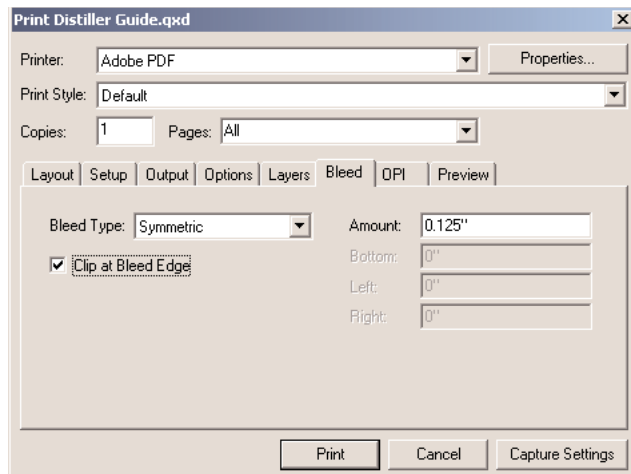
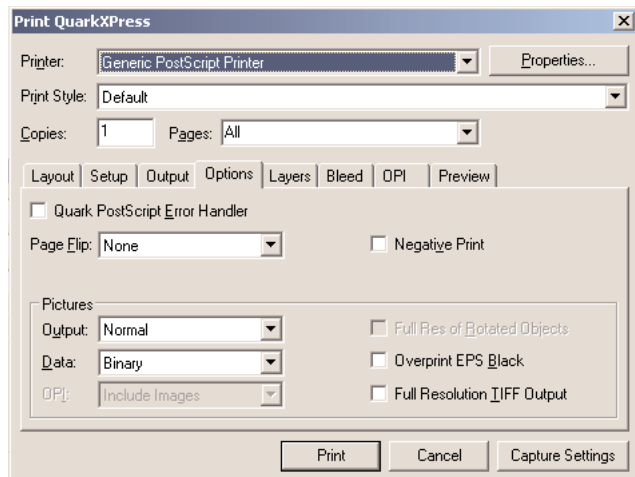


Output Tab

- If the job is two color, leave "Print Colors" as CMYK
- Halftoning should be set to Conventional
- Resolution should be set to 2400 dpi
- Frequency should be set to 150 lpi (differs from the PostScript option)

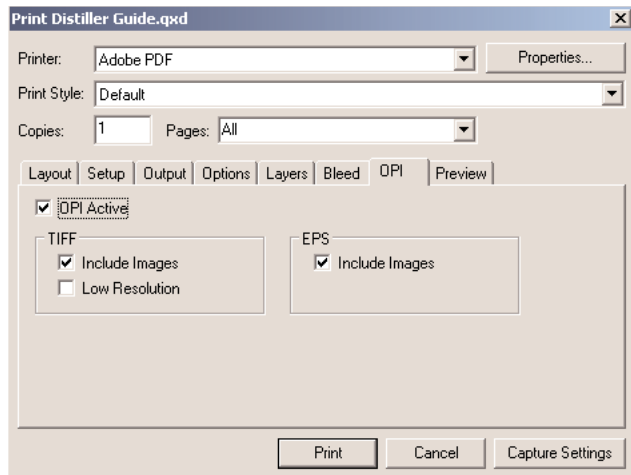
Options Tab

- Do not check the Quark PostScript Error Handler
- Page Flip should be set to none
- Do not select Negative Print
- The Output setting should be normal
- The Data setting should be binary
- Do not select Overprint EPS Black
- Select Full Resolution TIFF Output (differs from option for PostScript)



Bleed Tab

- The Bleed Type setting is Symmetric
- Uncheck the Clip at Bleed Edge (differs from option for PostScript)
- The amount is 0.125"



OPI Tab

- Uncheck OPI Active (option differs from PostScript)

Preview Tab

- This tab will display a summary of all the options that should be set and also display a viewable page for positioning.
- Click the Capture Settings button. QuarkXPress is now configured to print a document.

